

Carl Stahl

KROMER



GENERAL CATALOG

KROMER® Spring Balancers

Ergonomic support for industrial environments

PREMIUM QUALITY
MADE IN GERMANY



DIN
15112





Contents

Product functions	3
International comparison	4
Safety and technical features	6
Product choice and installation	7
Retractors	8
Balancers	10
Air hose edition	14
Rust-free Retractors	16
Rust-free Balancers	18
ATEX Balancers & Positioners	20
Accessories	21
About us	22
About services	22
Application list	23

PRODUCT FUNCTIONS

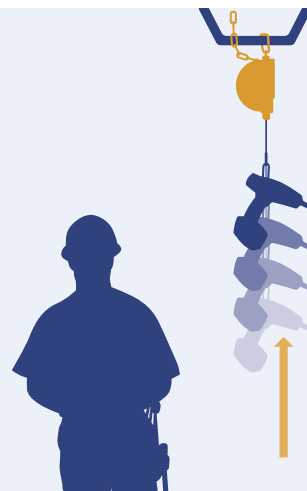
Our different ergonomic concepts

Retractors

The retractor holds tools within easy reach for the user, contributing to an orderly work station.

Facts:

- Cylindrical shape
- Increasing retraction force
- Retracts the attached tool to its initial position

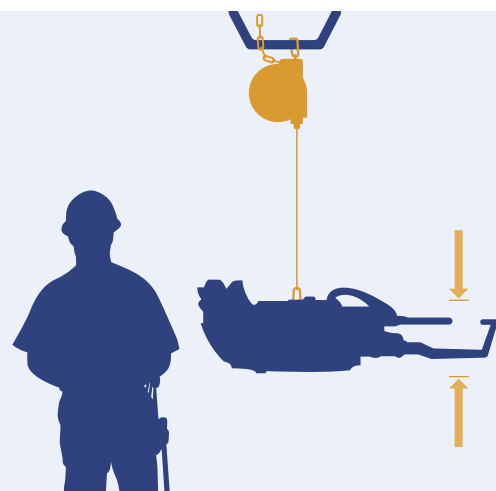


Balancers

The balancer holds tools and keeps them suspended reliably and safely in the desired position.

Facts:

- Conical shape
- Constant retraction force
- Holds the attached tool in the chosen position

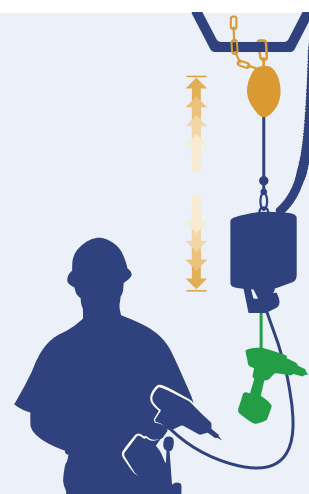


Positioners

The positioner holds tools reliable at any height, even when adding an extra tool.

Facts:

- Compact design
- Constant brake force
- Electrically insulated



INTERNATIONAL COMPARISON

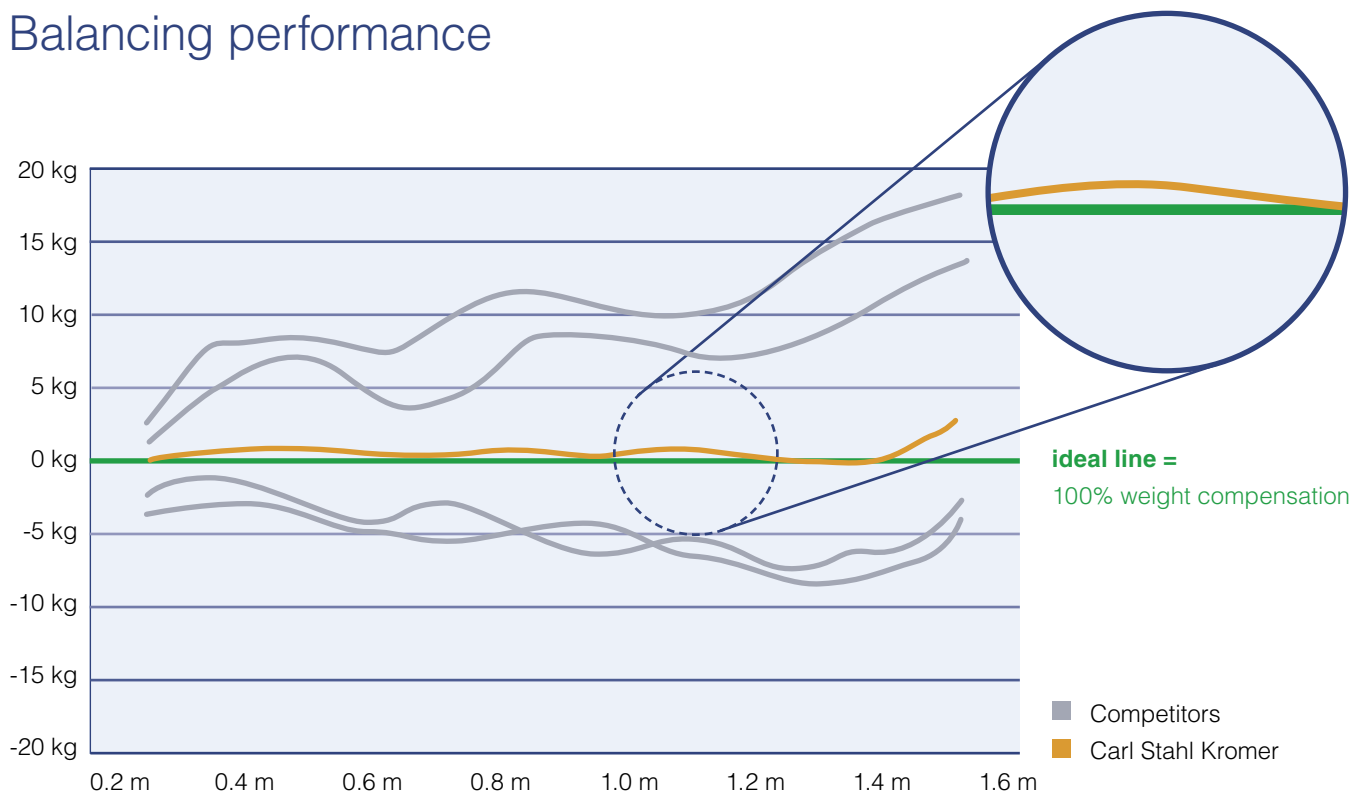
No rivals for Carl Stahl Kromer balancers worldwide

As indisputably proven by a comparison test conducted by the Esslingen University of Applied Sciences in Germany, Carl Stahl Kromer balancers are global quality leaders. This long-term study was designed to compare the best-known products from all over the world across representative weight classes.

Altogether, 15 parameters were part of the study, including extension force diagram, useful life, spare part availability and delivery time. The result: Our products were second to none. No other manufacturer could rival Carl Stahl Kromer.

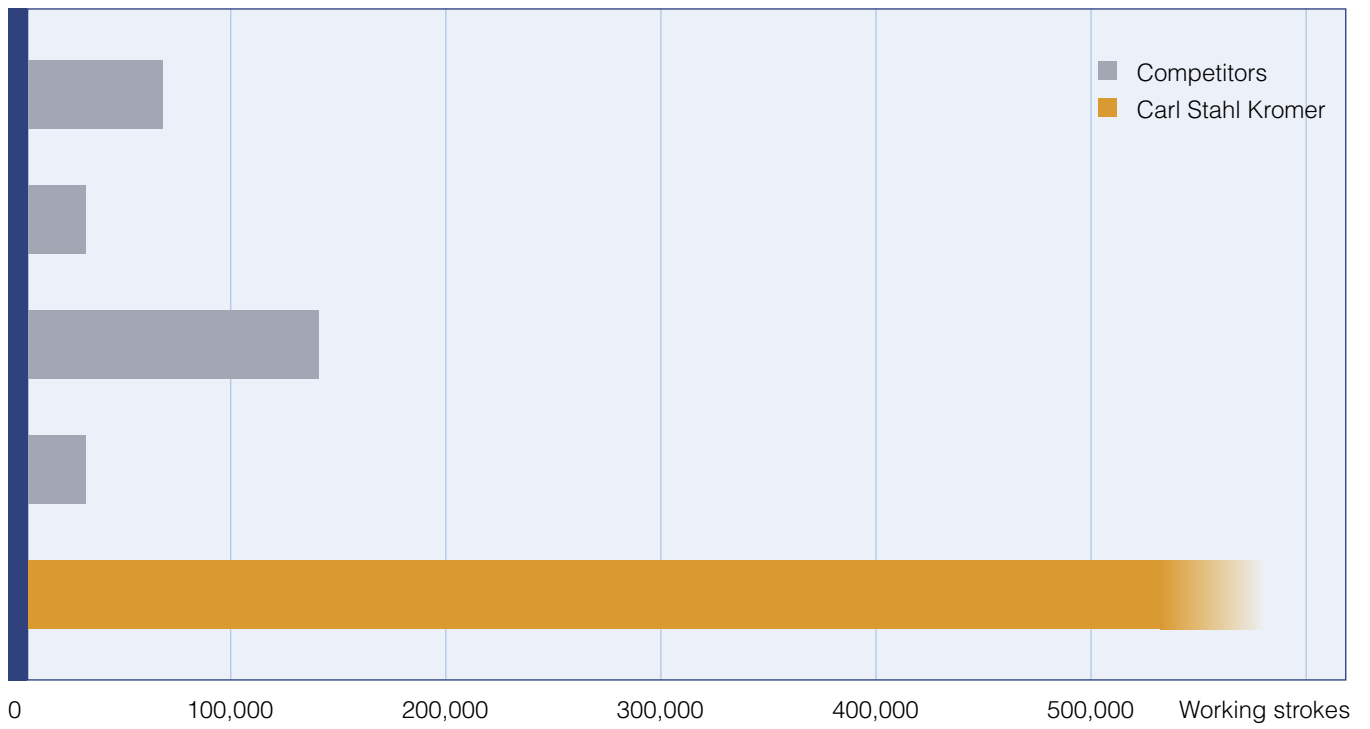
The most convincing result was rendered by the endurance test: Whereas 60 percent of all tested products were not even able to provide zero-failure performance for 100,000 working strokes at a cable travel of 1.5 m, the respective Carl Stahl Kromer balancer achieved no less than 540,000 working strokes without any losses in precision or basic functionality. The best competition product only managed 120,000 working strokes in this fatigue test, thus finishing far behind Carl Stahl Kromer.

Balancing performance



Force diagram: measurements across a cable extension range of 1.5 m
Load setting: 85 kg

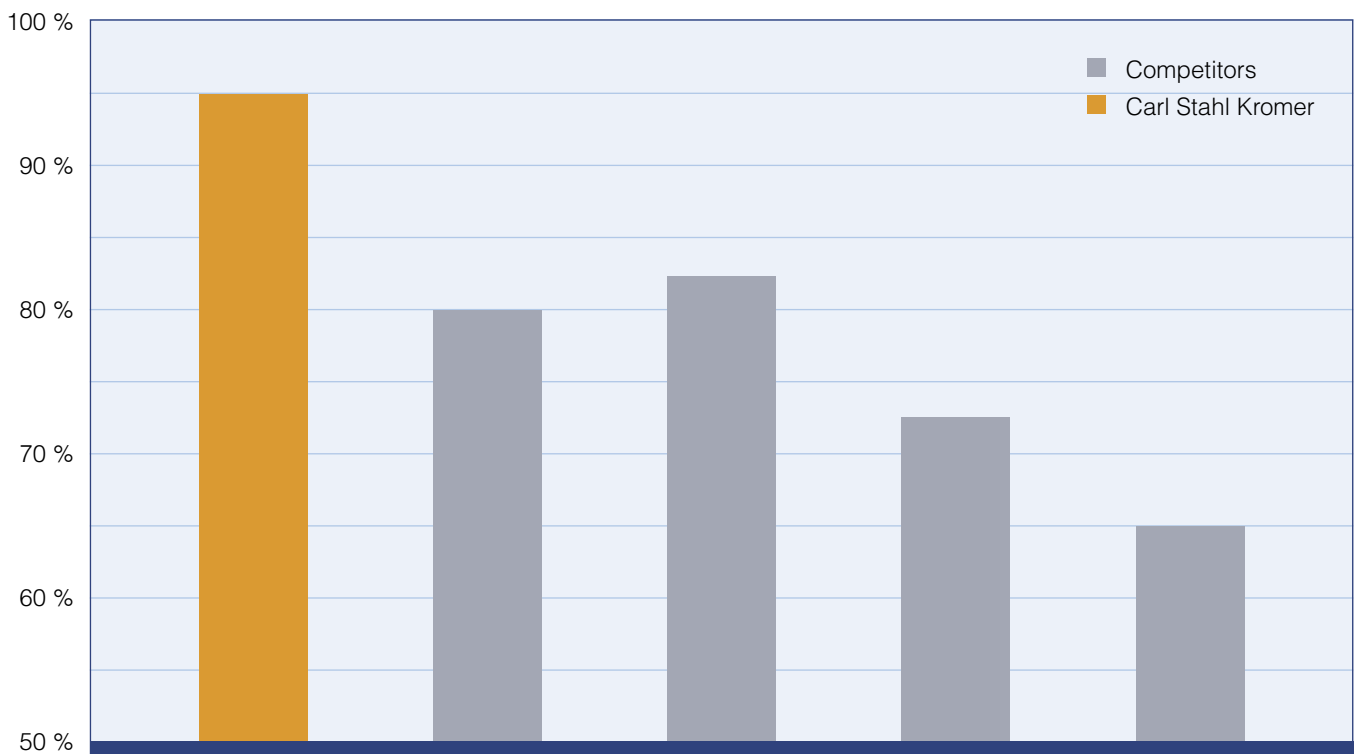
Durability



Test parameters: cable travel: 1.5 m; load setting: 85 kg

Conclusion

Assessment of the degree of fulfillment to all 15 parameters (page 4).

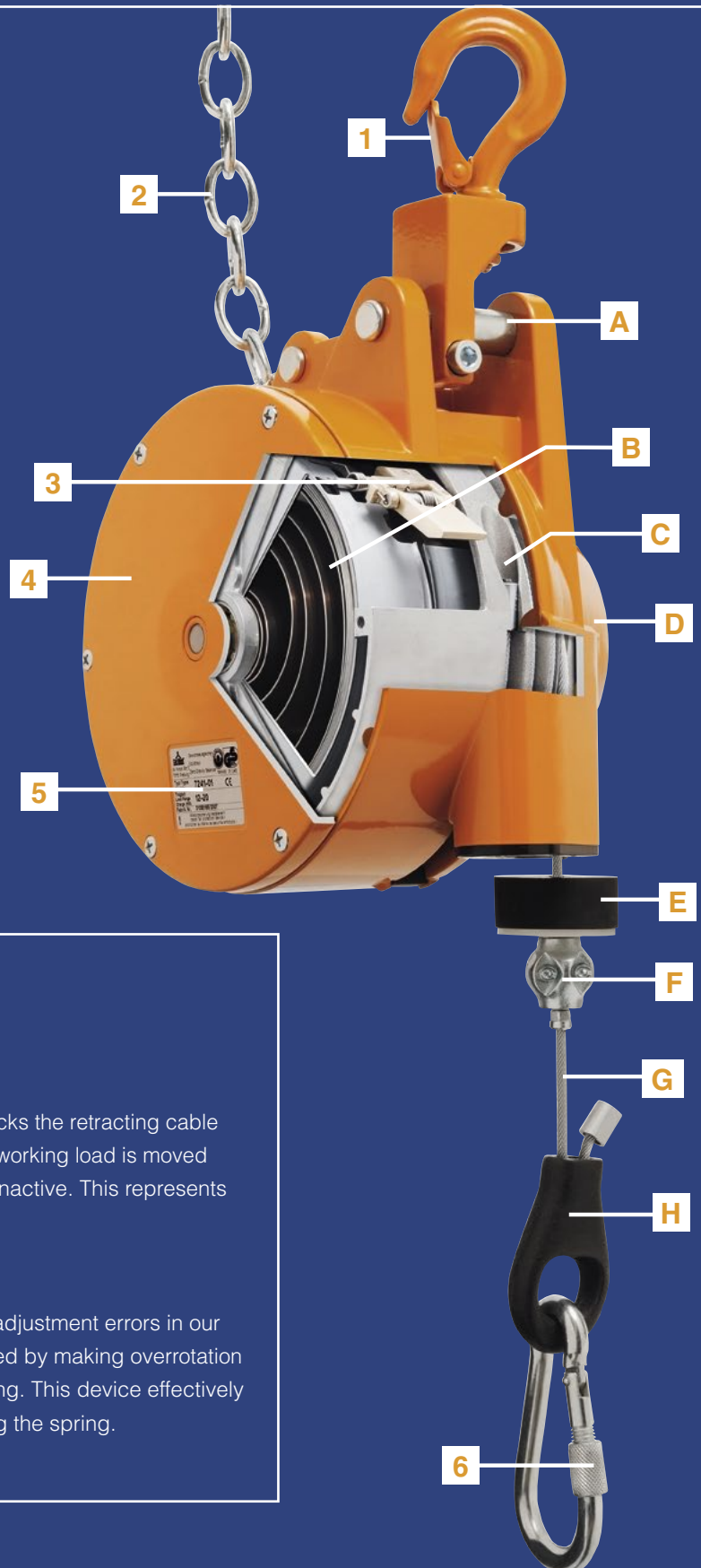


SAFETY AND TECHNICAL FEATURES

Manufactured according to the highest safety standards

Safety features

- 1 High strength safety hook**
Above 5-times safety
- 2 Safety chain**
Fall prevention feature
- 3 Spring fracture safeguard**
Starting at 3 kg
- 4 Shock proof design**
Extra impact resistant housing
- 5 Conformity and safety**
CE, GS-certified (tested for safety)
- 6 Screw type snap hook**
Safe load attachment



Further features

Ratchet lock (optional)

The ratchet lock is an automatic arresting mechanism that locks the retracting cable in predetermined positions. It is automatically activated if the working load is moved back slowly. If pushed back quickly, the mechanism remains inactive. This represents a significant ergonomic improvement for some applications.

Patented freewheel device

Our patented freewheel feature provides protection against adjustment errors in our balancer models 7241, 7248, 7251 and 7261. This is achieved by making overrotation in the “minus” direction ineffective, with no impact on the spring. This device effectively prevents spring fracture caused inadvertently when releasing the spring.

Technical features

- A Adjustable alignment**
Extended life-time
- B Premium spring technology**
Exclusive long-life steel
- C Easy cable replacement**
No disassembling required
- D Patented freewheel device**
Protection against adjustment errors
- E Elastic cable stop buffer**
Shock absorbing protector
- F Cable clamp**
Adjustable stroke limiter
- G Special cable design**
High-strength anti-rotation steel cable
- H Cable wedge**
Adjustable cable extension

PRODUCT CHOICE AND INSTALLATION

How to choose the right product

- Choose the right product function for your application (see page 3).
- Make sure that the weight of your individual application is always within the load range of the respective product.
- Make sure that the working area is covered by the cable travel of the selected product.

Notes for installation

For safety reasons, read the respective user manual before installation. You can also find the manuals in the download area on our website.

- Check the stability of the hanging point for the spring balancer.
- Check the stability of the hanging point for the fall protection chain.
- Ensure the device is hanging freely and movably.
- Attach the fall protection chain in independent position.

Video tutorials

- Load adjustment
- Adjustment of suspension
- Cable replacement
- Spring replacement
- Info videos and more



PREMIUM QUALITY



MADE IN GERMANY



Retractors

TYPE 5200



ID no.	Load range (kg)	Cable travel (m)
5200 0000 01	0.5 - 1.2	2.0
5200 0000 02	1.0 - 2.0	2.0



TYPE 7200



ID no.	Load range (kg)	Cable travel (m)
7200 0800 00	0.0 - 0.5	1.6
7200 0800 01	0.3 - 1.5	1.6
7200 0800 02	1.2 - 2.5	1.6



TYPE 7211/7212

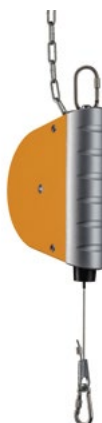


ID no.	Load range (kg)	Cable travel (m)
7211 0800 01	0.5 - 2.0	2.5
7211 0800 02	1.5 - 3.0	2.5
7211 0800 05	3.0 - 5.5	1.4
7212 0800 01	0.5 - 2.0	2.5
7212 0800 02	1.5 - 3.0	2.5
7212 0800 05	3.0 - 5.5	1.4

■ with ratchet lock



TYPE 7221/7222



ID no.	Load range (kg)	Cable travel (m)
7221 0800 01	2.0 - 5.0	3.0
7221 0800 02	4.0 - 8.0	3.0
7221 0800 03	7.0 - 10.0	3.0
7221 0800 04	10.0 - 14.0	3.0
7222 0800 01	2.0 - 5.0	3.0
7222 0800 02	4.0 - 8.0	3.0
7222 0800 03	7.0 - 10.0	3.0
7222 0800 04	10.0 - 14.0	3.0

■ with ratchet lock



Technical features

Features	Types	5200	7200	7211	7212	7221	7222
General information	Load range (kg)	0.5 - 2	0 - 2.5	0.5 - 5.5	0.5 - 5.5	2 - 14	2 - 14
	Cable travel (m)	2.0	1.6	1.4/2.5	1.4/2.5	3.0	3.0
Top suspension	Screw type trigger snap hook		•	•	•	•	•
	Electrically insulated suspension	•	•	•	•	•	•
	Freely rotating and swiveling		•	•	•	•	•
Safety chain	High-strength steel		•	•	•	•	•
Housing	Impact-resistant plastic		•	•	•	•	•
	Abrasion-resistant plastic	•	•	•	•	•	•
Cable drum	Abrasion-resistant plastic	•	•	•	•	•	•
	Drum lock					•	•
	Automatic ratchet lock				•		•
Load spring	Exclusive long-life steel	•	•	•	•	•	•
	Riveted version			•	•		
	Belted version	•	•			•	•
	Spring fracture safeguard ≥ 3 kg			•	•	•	•
Load setting	Direct handwheel adjustment	•					
	Secured shaft adjustment		•	•	•		
	Worm gear adjustment					•	•
Cable	Polyamide braided	•					
	Flexible, anti-rotation, steel		•	•	•	•	•
	Adjustable extension length					•	•
	Elastic stop buffer	•	•	•	•	•	•
	Adjustable stroke limiter		•	•	•	•	•
Load suspension	Light-duty spring hook	•	•				
	Screw type trigger snap hook			•	•	•	•
Lubrication	Silicon-free grease	•	•	•	•	•	•
Maintenance	Easy cable replacement					•	•
	Spare part support					•	•
Also available as	Rust-free edition (page 16)		•	•	•	•	•
	Air hose edition (page 14)			•	•	•	•



Service videos

www.kromer.com

Technical drawings



Balancers

TYPE 7228



ID no.	Load range (kg)	Cable travel (m)
7228 0000 01	0.4 - 1.2	1.6
7228 0000 02	1.2 - 2.6	1.6
7228 0000 03	2.6 - 3.8	1.6
7228 0000 04	3.8 - 5.2	1.6
7228 0000 05	5.2 - 6.5	1.6



TYPE 7230/7231



ID no.	Load range (kg)	Cable travel (m)
7230 0000 01	3.0 - 5.0	2.0
7230 0000 02	4.5 - 7.0	2.0
7230 0000 03	6.0 - 10.0	2.0
7230 0000 04	9.0 - 14.0	2.0
7230 0000 05	13.0 - 17.0	2.0
7230 0000 06	16.0 - 21.0	2.0
7231 0000 01	3.0 - 5.0	2.0
7231 0000 02	4.5 - 7.0	2.0
7231 0000 03	6.0 - 10.0	2.0
7231 0000 04	9.0 - 14.0	2.0
7231 0000 05	13.0 - 17.0	2.0
7231 0000 06	16.0 - 21.0	2.0

■ with ratchet lock



TYPE 7235/7236



ID no.	Load range (kg)	Cable travel (m)
7235 0000 01	15.0 - 25.0	2.0
7235 0000 02	25.0 - 35.0	2.0
7235 0000 03	35.0 - 45.0	2.0
7235 0000 04	45.0 - 55.0	2.0
7236 0000 01	15.0 - 25.0	2.0
7236 0000 02	25.0 - 35.0	2.0
7236 0000 03	35.0 - 45.0	2.0
7236 0000 04	45.0 - 55.0	2.0

■ with ratchet lock



TYPE 7241



Manual ratchet lock version

ID no.	Load range (kg)	Cable travel (m)
7241 0800 01	12.0 - 20.0	2.0
7241 0800 02	20.0 - 30.0	2.0
7241 0800 03	30.0 - 45.0	2.0
7241 0800 04	45.0 - 60.0	2.0
7241 0800 05	60.0 - 75.0	2.0
7241 0800 06	75.0 - 90.0	2.0
7241 0800 07	90.0 - 100.0	2.0
7241 0800 81	12.0 - 20.0	2.0
7241 0800 82	20.0 - 30.0	2.0
7241 0800 83	30.0 - 45.0	2.0
7241 0800 84	45.0 - 60.0	2.0
7241 0800 85	60.0 - 75.0	2.0
7241 0800 86	75.0 - 90.0	2.0
7241 0800 87	90.0 - 100.0	2.0

■ with Manual ratchet lock



TYPE 7245



ID no.	Load range (kg)	Cable travel (m)
7245 0000 01	55.0 - 70.0	1.8
7245 0000 02	70.0 - 85.0	1.8
7245 0000 03	85.0 - 95.0	1.8
7245 0000 04	95.0 - 110.0	1.8
7245 0000 05	110.0 - 125.0	1.8



TYPE 7248

Double cable balancer
for max. safety

ID no.	Load range (kg)	Cable travel (m)
7248 0800 01	12.0 - 20.0	2.0
7248 0800 02	20.0 - 30.0	2.0
7248 0800 03	30.0 - 45.0	2.0
7248 0800 04	45.0 - 60.0	2.0
7248 0800 05	60.0 - 75.0	2.0
7248 0800 06	75.0 - 90.0	2.0
7248 0800 07	90.0 - 100.0	2.0



TYPE 7251



1 Single spring

2 Double spring

ID no.	Load range (kg)	Cable travel (m)
7251 0800 01	15.0 - 25.0	3.0
7251 0800 02	25.0 - 35.0	3.0
7251 0800 03	35.0 - 50.0	3.0
1 7251 0800 04	50.0 - 65.0	3.0
7251 0800 05	65.0 - 80.0	3.0
7251 0800 06	80.0 - 90.0	3.0
7251 0800 07	90.0 - 100.0	3.0
7251 0800 08	100.0 - 115.0	3.0
7251 0800 09	115.0 - 130.0	3.0
7251 0800 10	130.0 - 140.0	3.0
2 7251 0800 11	140.0 - 150.0	3.0
7251 0800 12	150.0 - 170.0	3.0
7251 0800 13	170.0 - 180.0	3.0
7251 0800 14	180.0 - 190.0	3.0
7251 0800 15	190.0 - 200.0	3.0



TYPE 7261



ID no.	Load range (kg)	Cable travel (m)
7261 0800 01	150.0 - 175.0	1.5
7261 0800 02	175.0 - 200.0	1.5
7261 0800 03	200.0 - 225.0	1.5
7261 0800 04	225.0 - 250.0	1.5
7261 0800 05	250.0 - 275.0	1.5
7261 0800 06	275.0 - 300.0	1.5



Technical features

Features	Types	7228	7230	7231	7235	7236	7241	7245	7248	7251	7261
General information	Load range (kg)	0.4-6.5	3-21	3-21	15-55	15-55	12-100	55-125	12-100	15-200	150-300
	Cable travel (m)	1.6	2.0	2.0	2.0	2.0	2.0	1.8	2.0	3.0	1.5
Top suspension	Screw type trigger snap hook	•			•	•		•			
	High-strength safety hook		•	•			•		•	•	•
	Electrically insulated suspension	•	•	•							
	Ball bearing embedded		•	•			•		•	•	•
	Freely rotating and swiveling	•	•	•	•	•	•	•	•	•	•
	Adjustable gravity alignment						•		•	•	•
Safety chain	High-strength steel	•	•	•	•	•	•	•	•	•	•
	Shock-absorbing design						•		•	•	•
Housing	Impact-resistant plastic	•	•	•							
	Abrasion-resistant plastic	•	•	•							
	High-strength aluminum				•	•	•	•	•	•	•
Cable drum	Abrasion-resistant plastic	•	•	•							
	High-strength aluminum				•	•	•	•	•	•	•
	Ball bearing embedded				•	•	•	•	•	•	•
	Manual lock	•	•		•			•	•	•	•
	Manual ratchet lock (optional)						•				
Automatic ratchet lock			•		•						
Load spring	Exclusive long-life steel	•	•	•	•	•	•	•	•	•	•
	Riveted version	•	•	•							
	Containerized version				•	•	•	•	•	•	•
	Patented freewheel protection						•		•	•	•
	Spring fracture safeguard ≥ 3 kg	•	•	•	•	•	•	•	•	•	•
Load setting	Secured shaft adjustment	•									
	Worm gear adjustment		•	•	•	•	•	•	•	•	•
Cable	Flexible, anti-rotation, steel	•	•	•	•	•	•	•	•	•	•
	Adjustable extension	•	•	•			•		•	•	•
	Adjustable stroke limiter	•	•	•	•	•	•	•	•	•	•
	Elastic stop buffer	•	•	•	•	•	•	•	•	•	•
Load suspension	Screw type trigger snap hook	•	•	•	•	•	•	•	•	•	
	Free rotating hook								•		•
Lubrication	Silicone free grease	•	•	•	•	•	•	•	•	•	•
Maintenance	Easy cable replacement	•	•	•	•	•	•	•	•	•	•
	Spare part support	•	•	•	•	•	•	•	•	•	•
Also available as	Rust-free edition (page 18)		•	•	•	•	•			•	
	ATEX edition (page 20)				•						



Service videos

www.kromer.com

Technical drawings



Air hose edition

**TYPE 7223
AIR HOSE BALANCER**

Operating pressure: max. 10 bar



ID no.	Load range (kg)	Cable travel (m)	kg
7223 0000 01	0.4 - 1.2	0.8	1.3
1 7223 0000 02	1.2 - 2.2	0.8	1.4
7223 0000 03	2.2 - 3.0	0.8	1.4

1 Air hose version 6x8 mm



**TYPE 7211/7212
AIR HOSE RETRACTOR**

Operating pressure: max. 10 bar



ID no.	Load range (kg)	Cable travel (m)
7211 0801 01	0.5 - 2.0	2.5
7211 0801 02	1.5 - 3.0	2.5
2 7211 0801 05	3.0 - 5.5	1.4
7212 0801 01	0.5 - 2.0	2.5
7212 0801 02	1.5 - 3.0	2.5
7212 0801 05	3.0 - 5.5	1.4
7211 0801 11	0.5 - 2.0	2.5
7211 0801 12	1.5 - 3.0	2.5
3 7211 0801 15	3.0 - 5.5	1.4
7212 0801 11	0.5 - 2.0	2.5
7212 0801 12	1.5 - 3.0	2.5
7212 0801 15	3.0 - 5.5	1.4

2 Air hose version 9x13 mm

3 Air hose version 11x16 mm

with ratchet lock



**TYPE 7221/7222
AIR HOSE RETRACTOR**

Operating pressure: max. 10 bar



ID no.	Load range (kg)	Cable travel (m)
7221 0801 01	2.0 - 5.0	3.0
7221 0801 02	4.0 - 8.0	3.0
7221 0801 03	7.0 - 10.0	3.0
2 7221 0801 04	10.0 - 14.0	3.0
7222 0801 01	2.0 - 5.0	3.0
7222 0801 02	4.0 - 8.0	3.0
7222 0801 03	7.0 - 10.0	3.0
7222 0801 04	10.0 - 14.0	3.0
7221 0801 11	2.0 - 5.0	3.0
7221 0801 12	4.0 - 8.0	3.0
7221 0801 13	7.0 - 10.0	3.0
3 7221 0801 14	10.0 - 14.0	3.0
7222 0801 11	2.0 - 5.0	3.0
7222 0801 12	4.0 - 8.0	3.0
7222 0801 13	7.0 - 10.0	3.0
7222 0801 14	10.0 - 14.0	3.0

2 Air hose version 9x13 mm

3 Air hose version 11x16 mm

with ratchet lock



Technical features

Features	Types	7223	7211	7212	7221	7222
General information	Load range (kg)	0.4 - 3	0.5 - 5.5	0.5 - 5.5	2 - 14	2 - 14
	Cable travel (m)	0.8	1.4/2.5	1.4/2.5	3.0	3.0
Top suspension	Screw type trigger snap hook	•	•	•	•	•
	Electrically insulated suspension	•	•	•	•	•
	Freely rotating and swiveling	•	•	•	•	•
Safety chain	High-strength steel	•	•	•	•	•
Housing	Impact-resistant plastic	•	•	•	•	•
	Abrasion-resistant plastic	•	•	•	•	•
Cable drum	Abrasion-resistant plastic	•	•	•	•	•
	Manual drum lock	•			•	•
	Automatic ratchet lock			•		•
Load spring	Exclusive long-life steel	•	•	•	•	•
	Riveted spring	•	•	•		
	Belted spring				•	•
	Spring fracture safeguard ≥ 3 kg		•	•	•	•
Load setting	Secured shaft adjustment	•	•	•		
	Worm gear adjustment				•	•
Air-hose	Sturdy and flexible design	•	•	•	•	•
	6 x 8 mm	•				
	9 x 13 mm		•	•	•	•
	11 x 16 mm		•	•	•	•
Cable	Flexible, anti-rotation, steel		•	•	•	•
	Adjustable extension				•	•
	Elastic stop buffer	•	•	•	•	•
	Adjustable stroke limiter	•	•	•	•	•
Load suspension	Screw type trigger snap hook		•	•	•	•
Lubrication	Silicon-free	•	•	•	•	•
Maintenance	Easy cable replacement				•	•
	Spare parts support	•			•	•



Service videos

www.kromer.com

Technical drawings



Rust-free Retractors

TYPE 7200



ID no.	Load range (kg)	Cable travel (m)
7200 0801 30	0.0 - 0.5	1.6
7200 0801 31	0.5 - 1.5	1.6
7200 0801 32	1.2 - 2.5	1.6



TYPE 7211/7212



ID no.	Load range (kg)	Cable travel (m)
7211 0801 31	0.5 - 2.0	2.5
7211 0801 32	1.5 - 3.0	2.5
7211 0801 35	3.0 - 5.5	1.4
7212 0801 31	0.5 - 2.0	2.5
7211 0801 32	1.5 - 3.0	2.5
7212 0801 35	3.0 - 5.5	1.4

■ with ratchet lock



TYPE 7221/7222



ID no.	Load range (kg)	Cable travel (m)
7221 0801 31	2.0 - 5.0	3.0
7221 0801 32	4.0 - 8.0	3.0
7221 0801 33	7.0 - 10.0	3.0
7221 0801 34	10.0 - 14.0	3.0
7222 0801 31	2.0 - 5.0	3.0
7222 0801 32	4.0 - 8.0	3.0
7222 0801 33	7.0 - 10.0	3.0
7222 0801 34	10.0 - 14.0	3.0

■ with ratchet lock



Technical features

Features	Types	7200	7211	7212	7221	7222
General information	Load range (kg)	0 - 2.5	0.5 - 5.5	0.5 - 5.5	2 - 14	2 - 14
	Cable travel (m)	1.6	1.4/2.5	1.4/2.5	3.0	3.0
Top suspension	Stainless steel screw type trigger snap hook	•	•	•	•	•
	Freely rotating and swiveling	•	•	•	•	•
Safety chain	High strength stainless steel	•	•	•	•	•
Housing	High impact-resistant plastic	•	•	•	•	•
	Abrasion-resistant plastic	•	•	•	•	•
Cable drum	Abrasion-resistant plastic	•	•	•	•	•
Drum lock	Manuell				•	•
	Automatic ratchet			•		•
Load spring	Long life special steel	•	•	•	•	•
	Safety riveted spring	•	•	•		
	Safety belted spring				•	•
	Spring fracture safeguard above 3 kg capacity		•	•	•	•
Load setting	Direct shaft adjustment	•	•	•		
	Worm gear adjustment				•	•
Cable	Flexible stainless steel	•	•	•	•	•
	Light-duty spring hook	•				
	Stainless steel screw type trigger snap hook		•	•	•	•
	Adjustable cable stop buffer	•	•	•	•	•
	Quick cable change				•	•
Lubrication	Food graded grease (NSF conform)	•	•	•	•	•



Service videos

www.kromer.com

Technical drawings



Rust-free Balancers

TYPE 7230/7231



ID no.	Load range (kg)	Cable travel (m)
7230 0001 31	3.0 - 5.0	2.0
7230 0001 32	4.5 - 7.0	2.0
7230 0001 33	6.0 - 10.0	2.0
7230 0001 34	9.0 - 14.0	2.0
7230 0001 35	13.0 - 17.0	2.0
7230 0001 36	16.0 - 21.0	2.0
7231 0001 31	3.0 - 5.0	2.0
7231 0001 32	4.5 - 7.0	2.0
7231 0001 33	6.0 - 10.0	2.0
7231 0001 34	9.0 - 14.0	2.0
7231 0001 35	13.0 - 17.0	2.0
7231 0001 36	16.0 - 21.0	2.0



■ with ratchet lock

TYPE 7235/7236



ID no.	Load range (kg)	Cable travel (m)
7235 0001 31	15.0 - 25.0	2.0
7235 0001 32	25.0 - 35.0	2.0
7235 0001 33	35.0 - 45.0	2.0
7235 0001 34	45.0 - 55.0	2.0
7236 0001 31	15.0 - 25.0	2.0
7236 0001 32	25.0 - 35.0	2.0
7236 0001 33	35.0 - 45.0	2.0
7236 0001 34	45.0 - 55.0	2.0



■ with ratchet lock

TYPE 7241



ID no.	Load range (kg)	Cable travel (m)
7241 0801 31	12.0 - 20.0	2.0
7241 0801 32	20.0 - 30.0	2.0
7241 0801 33	30.0 - 45.0	2.0
7241 0801 34	45.0 - 60.0	2.0
7241 0801 35	60.0 - 75.0	2.0
7241 0801 36	75.0 - 90.0	2.0
7241 0801 37	90.0 - 100.0	2.0



TYPE 7251



ID no.	Load range (kg)	Cable travel (m)
7251 0801 01	15.0 - 25.0	3.0
Load capacity from 25 kg to 50 kg. Item number available upon request.		
7251 0801 04	50.0 - 65.0	3.0
7251 0801 05	65.0 - 80.0	3.0
7251 0801 06	80.0 - 90.0	3.0
7251 0801 07	90.0 - 100.0	3.0
7251 0801 08	100.0 - 115.0	3.0
Load capacity from 115 kg to 190 kg. Item number available upon request.		
7251 0801 15	190.0 - 200.0	3.0



Technical features

Features	Types	7230	7231	7235	7236	7241	7251
General information	Load range (kg)	3 - 21	3 - 21	15 - 55	15 - 55	12 - 100	15 - 200
	Cable travel (m)	2.0	2.0	2.0	2.0	2.0	3.0
Top suspension	Stainless steel screw type trigger snap hook	•	•	•	•		
	Stainless steel safety hook					•	•
	Ball bearing embedded					•	•
	Freely rotating and swiveling	•	•	•	•	•	•
	Adjustable gravity alignment					•	•
Safety chain	High strength stainless steel	•	•	•	•	•	•
Housing	High impact-resistant plastic	•	•				
	Abrasion-resistant plastic	•	•				
	Uncoated high strength aluminum			•	•	•	•
Cable drum	Abrasion-resistant plastic	•	•				
	Uncoated high strength aluminum			•	•	•	•
	Closed ball bearing embedded			•	•	•	•
Drum lock	Manuell	•	•	•	•	•	•
	Automatic ratchet		•		•		
Load spring	Long life special steel	•	•	•	•	•	•
	Safety riveted spring	•	•	•	•		
	Safety containerized spring					•	•
	Spring fracture safeguard	•	•	•	•	•	•
Load setting	Worm gear adjustment	•	•	•	•	•	•
	Patented freewheel protected					•	•
Cable	Flexible stainless steel	•	•	•	•	•	•
	Stainless steel screw type trigger snap hook	•	•	•	•	•	•
	Adjustable cable stop buffer	•	•	•	•	•	•
	Quick cable change	•	•	•	•	•	•
Lubrication	Food graded grease (NSF conform)	•	•	•	•	•	•
Also available as	ATEX edition			•			



Service videos

www.kromer.com

Technical drawings



ATEX Balancers


TYPE 7235 EX



ID no.	Load range (kg)	Cable travel (m)
7235 EX00 01	15.0 – 25.0	2.0
7235 EX00 02	25.0 – 35.0	2.0
7235 EX00 03	35.0 – 45.0	2.0
7235 EX00 04	45.0 – 55.0	2.0

- Additional fall protection
- Safety hook with screw lock
- Freely rotatable and swiveling suspension
- Integrated earth connection
- Fast cable replacement system
- Stainless spring fracture safeguard
- Impact-resistant aluminum housing
- Stainless steel cable
- High performance load spring
- Screw-type snap hook for load suspension

CE  II 2/2G Ex h IIA+Ethanol T6 Gb/Gb

CE  II 2/2D Ex h IIIC T85°C Db/Db



More information

www.kromer.com

User manual



Positioners

TYPE 5250



ID no.	Load range (kg)	Cable travel (m)
5250 0000 00	0.5 - 6.0	1.5
5250 0000 01	2.0 - 7.0	1.5
5250 0000 02	0.5 - 3.0	1.5

- Impact and abrasion-resistant plastic
- Polyamide braided cable
- Easy brake force adjustment
- Constant brake force
- Freely rotating and swiveling hook
- Screw type spring hook
- Safety chain included



Service videos

www.kromer.com

Technical drawings



Accessories

LOAD SUSPENSION / ELECTRICALLY INSULATED SWIVEL



ID no.

007.415 001

Suitable for

7241, 7245, 7248, 7251

- Insulation up to 1,000 volts
- Max. load capacity: 200 kg
- Anti-rotation/protection of cable
- Smooth rotation with embedded ball bearing



LOAD SUSPENSION / SWIVEL



ID no.

007.415 003

Suitable for

7235/36, 7241, 7245, 7251

- Max. load capacity: 200 kg
- Anti-rotation/protection of cable
- Smooth rotation with embedded ball bearing



EXTRA CABLE EXTENSION



With our extra cable extension, the external cable can be extended.

ID no.

Extension (m)

Suitable for

007.335 016	+ 0.5	7200 - 7236
007.335 179	+ 1.0	7200 - 7236
007.335 180	+ 2.0	7200 - 7236
007.335 353	+ 0.5	7241 - 7261
007.335 181	+ 1.0	7241 - 7261
007.335 182	+ 2.0	7241 - 7261



Customized cables:

- Length variations
- Terminal variations
- Material variations
- Additional features

Further customization upon request.



CARL STAHL KROMER GMBH

About us

Carl Stahl Kromer is located close to Freiburg in the south-west of Germany. With over 100 years of experience and a comprehensive range of spring balancers, Carl Stahl Kromer offers the right solution for every application in its fields. In the year 2000, we became a part of the Carl Stahl Group with its international network in 70 locations. We are the proven global quality leader and set the benchmark in spring balancer technology.

About quality

Quality thinking accompanies every step throughout the entire process. Carl Stahl Kromer stands for sustainable and long-lasting products that benefit our customers and the environment in the long-term. The company has got a professional quality management system according to DIN EN ISO 9001.



About environmental protection

Environmental protection and sustainability are important values in our company. We understand that a functioning ecosystem is the basis for the existence of our society and has to be protected. We are dedicated to minimizing waste, conserving resources and limiting our environmental impact as much as possible. Optimized production processes and new digital solutions support us in achieving our vision.



Carl Stahl Kromer is also certified according to DIN EN ISO 14001 and bears the seal CO₂ neutral company.



Further information



We are more than products

Our most important goal is to achieve the greatest level of customer satisfaction. Beyond the products we also provide:



Priority orders

In case of unexpected and/or urgent demands, we also offer express deliveries.



Customized solutions

With our experienced R&D, we are able to provide tailor-made concepts and look forward to developing new solutions together with you.



On-site support

We gladly support you on-site in order to enhance common business results and facilitate discovery of new opportunities.



Reliable delivery

Thanks to the support of state-of-the-art software and digitized processes, you can always rely on our confirmed delivery dates.



Individual consulting

Personal, multilingual consulting and information exchange. Choose your preferred communication channel: e-mail, chat, telephone or video conference.



Commercial support

Extend your marketing capacity and accelerate your success. Whenever you need commercial material, just get in touch with our marketing department.



Workshops with certificate

Learn all about Kromer devices and enable your maintenance personnel to provide perfect service and prevent production downtimes.



Spare parts

We believe in sustainable products and have therefore designed them in a modular way. This enables us to supply spare parts to ensure easy replacement.



After sales

Our experts will be pleased to take care of the maintenance of your Kromer products – providing fast and reliable service.



Do you have any more questions?
We look forward to helping you!

Common applications

Adjustable arms

Air tools / pneumatic tools

Airbrushes and guns for painting

Bottling machines

Cable holders in electric cabins

Callipers for holes and micrometers

Conveyor belts and rails

Cutting machines

Electrical and pneumatic staplers

Exhaust gas / combustion hoses

Filling machines for the food industry

Guns / airbrushes for spray paint

Hand scanners

High pressure floor polishers / cleaning equipment

Hoses for pumps

Industrial sewing machines

Machines for cellars

Marker machines

Monitor suspensions

Nailing machines

Pipes for petrol pumps

Power supply busbars

Power tools

Push-button panels for cranes

Riveters

Robots for dimensional control

Robot supply cables

Screw guns

Sheet welding machines

Soldering irons

Stapling machines

Strapping

Submersible pumps and stirrers

Suction systems

Suspension of equipment for leather processing

Tools for packing

Tools for slaughterhouses

Tools for working rock

Tools for working wood

Torque arms

Tying tools for cables

Welding guns

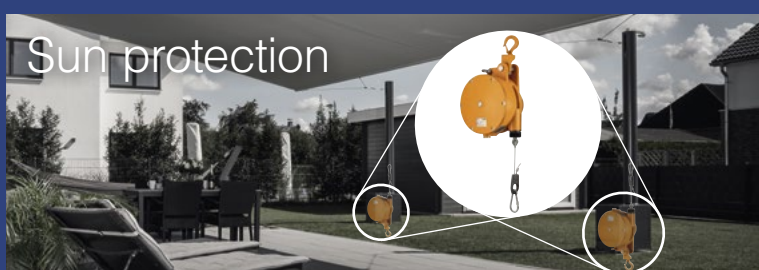
Welding jigs

X-Ray tools

Carl Stahl

KROMER

Fields of application



Further examples:



Your benefits

- Very high ergonomics due to the best balancing performance
- Longest service life worldwide thanks to excellent quality
- Increased safety and productivity at the workplace
- Easy and fast maintenance
- No power consumption needed
- Fast and reliable delivery times
- Premium Quality Made in Germany

Follow us:



CARL STAHL KROMER GMBH

Naegelsestrasse 37
79288 Gottenheim
Germany

Phone: +49 (0) 7665 / 50207-0

Fax: +49 (0) 7665 / 50207-22

E-Mail: kromer@kromer.com



Our general terms and conditions of purchase, delivery and payment apply. If these are not available, please request. Subject to change. Reprinting of this catalog, including excerpts, is prohibited.

www.kromer.com